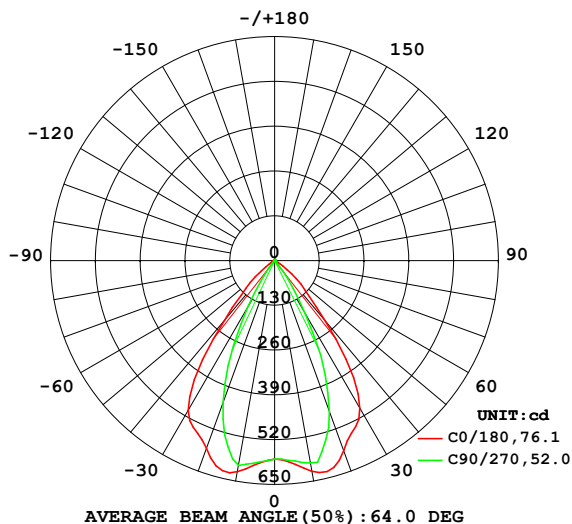


LUMINAIRE PHOTOMETRIC TEST REPORT

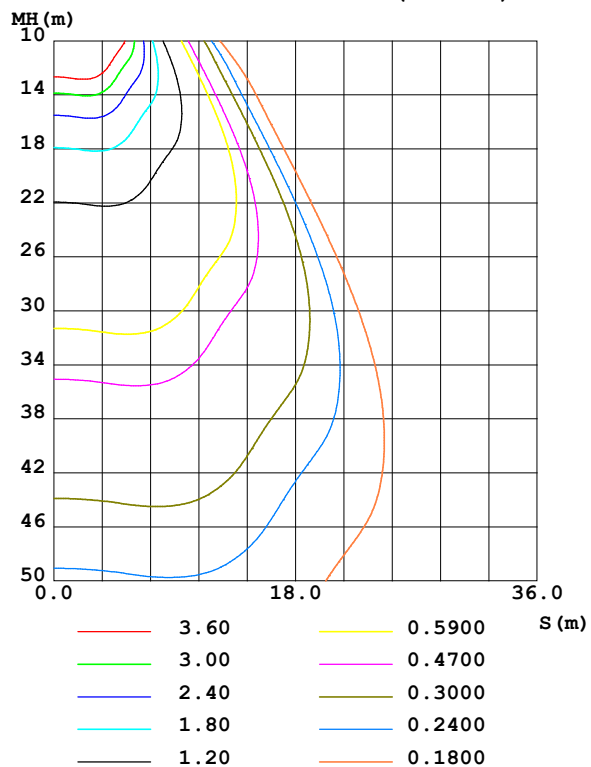
Test:U:220.70V I:0.0754A P:10.031W PF:0.6022 Freq:49.99Hz UTHDi:0.00% ITHDi:0.00% KDisp:0 Lamp Flux:625.975x1 lm		
NAME: SD3305 3000K RA90 80D	TYPE:	WEIGHT:
SPEC.:	DIM.:	SERIAL No.:
MFR.: VJC lighting	SUR.: 136*29	Shielding Angle:

DATA OF LAMP		PHOTOMETRIC DATA Eff: 62.41 lm/W			
MODEL	SD3305 3000K RA90 80D	I _{max} (cd)	642.9	S/MH(C0/180)	1.10
NOMINAL POWER(W)	10	LOR(%)	100.0	S/MH(C90/270)	0.75
RATED VOLTAGE(V)	220	TOTAL FLUX(lm)	625.97	η UP,DN(C0-180)	0.4,51.0
NOMINAL FLUX(lm)	625.975	CIE CLASS	DIRECT	η UP,DN(C180-360)	0.5,48.1
LAMPS INSIDE	1	η up (%)	0.9	CIBSE SHR NOM	0.75
TEST VOLTAGE(V)	220	η down (%)	99.1	CIBSE SHR MAX	0.90

LUMINOUS INTENSITY DISTRIBUTION DIAGRAM



C0 PLANE ISOLUX DIAGRAM (UNIT:lx)



C Range: 0 - 360DEG
C Interval: 22.5DEG
Test Speed: HIGH
Temperature:25.3℃
Operators:001
Test Date:2025-04-25

γ Range: 0 - 180DEG
γ Interval: 2.0DEG
Test System:EVERFINE GO-2000B_V1 SYSTEM V2.00.456
Humidity:65.0%
Test Distance:8.370m [K=1.0000]
Remarks:

ZONAL FLUX DIAGRAM

ZONAL FLUX DIAGRAM:

γ	C0	C45	C90	C135	C180	C225	C270	C315	γ	Φ zone	Φ total	%lum, lamp
10	620.4	609.9	596.5	613.5	621.4	616.8	603.9	612.8	0- 10	56.93	56.93	9.09,9.09
20	586.9	594.6	464.9	574.1	580.0	557.2	437.1	557.3	10- 20	168.7	225.6	36,36
30	494.9	353.7	179.5	332.7	501.9	318.2	154.4	311.4	20- 30	203.6	429.2	68.6,68.6
40	230.8	100.8	21.96	89.21	226.3	70.05	13.15	71.48	30- 40	135.9	565.1	90.3,90.3
50	83.47	9.007	5.144	8.086	73.20	5.994	4.292	6.755	40- 50	41.36	606.5	96.9,96.9
60	13.78	2.665	2.849	2.529	11.04	2.063	1.957	2.167	50- 60	9.908	616.4	98.5,98.5
70	5.846	1.240	1.280	1.129	5.211	0.7667	0.6843	0.8849	60- 70	2.807	619.2	98.9,98.9
80	0.6708	0.4330	0.4722	0.3783	0.3287	0.0828	0.0331	0.1883	70- 80	0.9851	620.2	99.1,99.1
90	0.0002	0.0226	0.0034	0.0003	0.0000	0	0	0	80- 90	0.1330	620.3	99.1,99.1
100	0.0331	0	0	0	0.0694	0.0112	0	0	90-100	0.0044	620.3	99.1,99.1
110	0.2846	0.0718	0	0.1330	0.3104	0.1860	0.0307	0.1086	100-110	0.0650	620.4	99.1,99.1
120	0.7356	0.4207	0.2188	0.5104	0.7561	0.5770	0.2779	0.4587	110-120	0.2943	620.7	99.2,99.2
130	1.300	0.9804	0.7483	1.068	1.335	1.145	0.8193	1.017	120-130	0.6775	621.4	99.3,99.3
140	1.854	1.651	1.481	1.729	1.916	1.808	1.555	1.709	130-140	1.063	622.4	99.4,99.4
150	2.261	2.283	2.224	2.291	2.345	2.356	2.315	2.364	140-150	1.261	623.7	99.6,99.6
160	2.620	2.757	2.771	2.594	2.707	2.664	2.853	2.841	150-160	1.165	624.8	99.8,99.8
170	3.143	3.179	3.046	3.052	3.197	3.094	3.097	3.236	160-170	0.8225	625.7	100,100
180	3.520	3.464	3.324	3.474	3.526	3.489	3.346	3.477	170-180	0.3121	626.0	100,100
DEG	LUMINOUS INTENSITY:cd									UNIT:lm		

Conical surface Flux(90deg): 596.13 lm

%lum = 95.2%

%lamp = 95.2%

Conical surface Flux(130deg): 618.36 lm

%lum = 98.8%

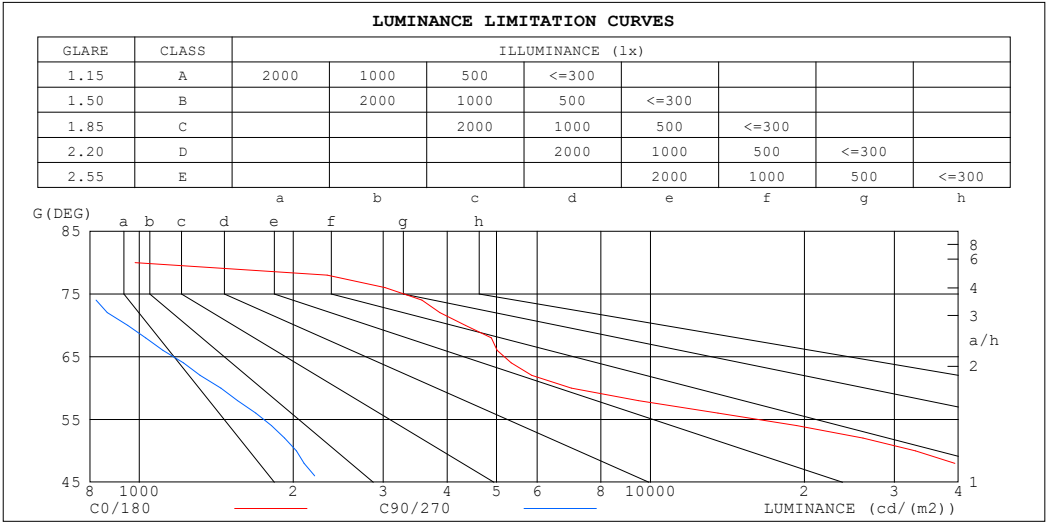
%lamp = 98.8%

C Range: 0 - 360DEG
 C Interval: 22.5DEG
 Test Speed: HIGH
 Temperature:25.3℃
 Operators:001
 Test Date:2025-04-25

γ Range: 0 - 180DEG
 γ Interval: 2.0DEG
 Test System:EVERFINE GO-2000B_V1 SYSTEM V2.00.456
 Humidity:65.0%
 Test Distance:8.370m [K=1.0000]
 Remarks:

LUMINANCE LIMITATION CURVES

Test:U:220.70V I:0.0754A P:10.031W PF:0.6022 Freq:49.99Hz		
UTHDi:0.00% ITHDi:0.00% KDisp:0 Lamp Flux:625.975x1 lm		
NAME: SD3305 3000K RA90 80D	TYPE:	WEIGHT:
SPEC.:	DIM.:	SERIAL No.:
MFR.: VJC lighting	SUR.: 136*29	Shielding Angle:



LUMINANCE cd/(m2)		
G (DEG)	C0/180	C90/270
85	656	768
80	981	689
75	3803	876
70	4343	949
65	5541	1266
60	7001	1444
55	19798	1857
50	32991	2028
45	52814	2728

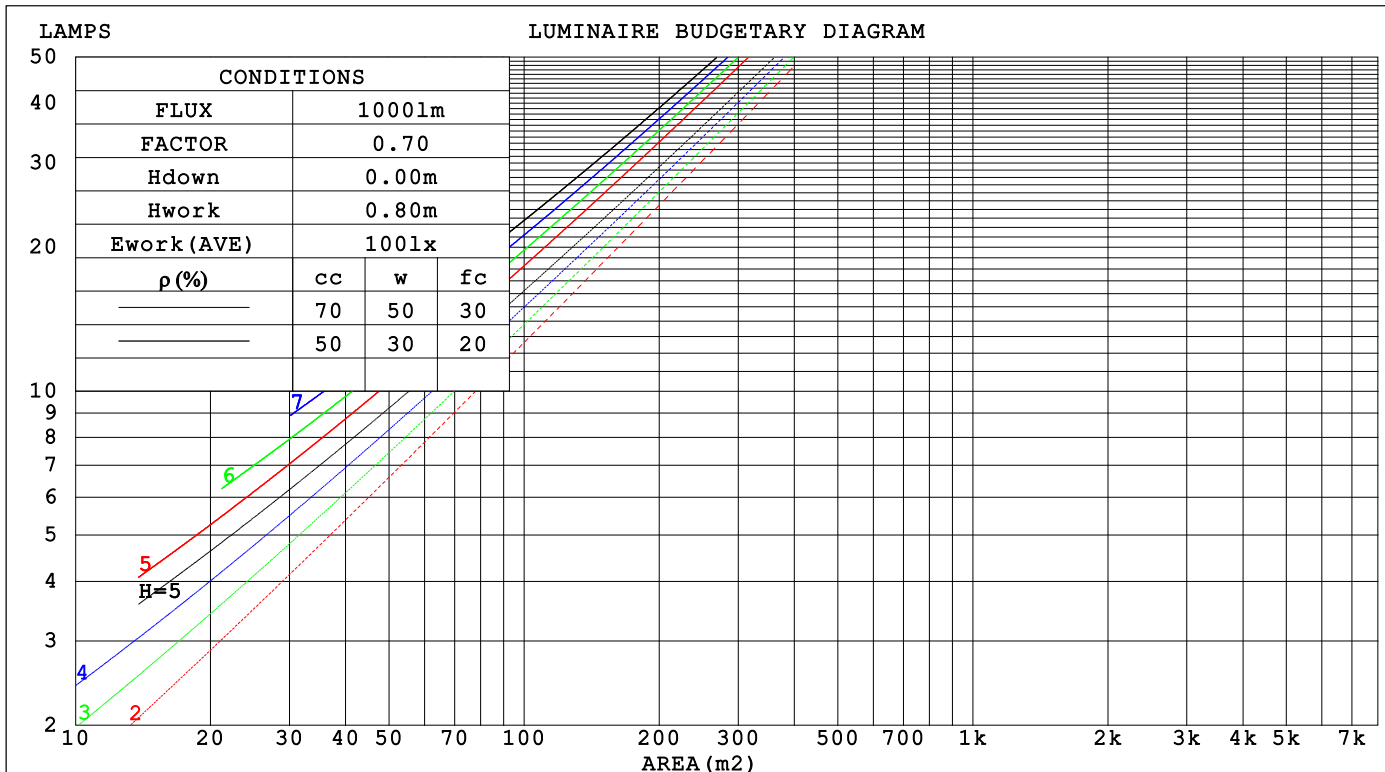
C Range: 0 - 360DEG
C Interval: 22.5DEG
Test Speed: HIGH
Temperature:25.3℃
Operators:001
Test Date:2025-04-25

γ Range: 0 - 180DEG
γ Interval: 2.0DEG
Test System:EVERFINE GO-2000B_V1 SYSTEM V2.00.456
Humidity:65.0%
Test Distance:8.370m [K=1.0000]
Remarks:

CU AND LUMINAIRE BUDGETARY ESTIMATE DIAGRAM

Test:U:220.70V I:0.0754A P:10.031W PF:0.6022 Freq:49.99Hz		
UTHDi:0.00% ITHDi:0.00% KDisp:0 Lamp Flux:625.975x1 lm		
NAME: SD3305 3000K RA90 80D	TYPE:	WEIGHT:
SPEC.:	DIM.:	SERIAL No.:
MFR.: VJC lighting	SUR.: 136*29	Shielding Angle:

pcc	80%			70%			50%			30%			10%			0
pw	50%	30%	10%	50%	30%	10%	50%	30%	10%	50%	30%	10%	50%	30%	10%	0
pfc	20%			20%			20%			20%			20%			0
RCR	RCR:Room Cavity Ratio Coefficients of Utilization(CU)															
0.0	1.19	1.19	1.19	1.16	1.16	1.16	1.11	1.11	1.11	1.06	1.06	1.06	1.01	1.01	1.01	.99
1.0	1.10	1.08	1.06	1.08	1.06	1.04	1.04	1.02	1.00	.00	.99	.97	.96	.95	.94	.92
2.0	1.02	.98	.95	1.01	.97	.94	.97	.94	.91	.94	.92	.89	.91	.89	.87	.86
3.0	.95	.90	.86	.94	.89	.85	.91	.87	.84	.88	.85	.82	.86	.83	.81	.79
4.0	.89	.83	.79	.88	.82	.78	.85	.81	.77	.83	.79	.76	.81	.78	.75	.74
5.0	.83	.77	.73	.82	.76	.72	.80	.75	.71	.78	.74	.71	.77	.73	.70	.68
6.0	.78	.71	.67	.77	.71	.67	.75	.70	.66	.74	.69	.66	.72	.68	.65	.64
7.0	.73	.67	.62	.72	.66	.62	.71	.65	.62	.69	.65	.61	.68	.64	.61	.59
8.0	.68	.62	.58	.68	.62	.58	.67	.61	.58	.65	.61	.57	.64	.60	.57	.56
9.0	.64	.58	.54	.64	.58	.54	.63	.58	.54	.62	.57	.54	.61	.57	.53	.52
10.0	.61	.55	.51	.60	.55	.51	.59	.54	.51	.59	.54	.50	.58	.53	.50	.49



C Range: 0 - 360DEG
C Interval: 22.5DEG
Test Speed: HIGH
Temperature:25.3℃
Operators:001
Test Date:2025-04-25

γ Range: 0 - 180DEG
γ Interval: 2.0DEG
Test System:EVERFINE GO-2000B_V1 SYSTEM V2.00.456
Humidity:65.0%
Test Distance:8.370m [K=1.0000]
Remarks:

WEC AND CCEC

Test:U:220.70V I:0.0754A P:10.031W PF:0.6022 Freq:49.99Hz			UTHDi:0.00% ITHDi:0.00% KDisp:0			Lamp Flux:625.975x1 lm		
NAME: SD3305 3000K RA90 80D			TYPE:			WEIGHT:		
SPEC.:			DIM.:			SERIAL No.:		
MFR.: VJC lighting			SUR.: 136*29			Shielding Angle:		

pcc	80%			70%			50%			30%			10%			0	
pw	50%	30%	10%	50%	30%	10%	50%	30%	10%	50%	30%	10%	50%	30%	10%	0	
pfc	20%			20%			20%			20%			20%			0	
RCR	RCR:Room Cavity Ratio						Wall Exitance Coefficients(WEC)										
0.0																	
1.0	.182	.104	.033	.175	.100	.032	.162	.093	.030	.150	.086	.028	.139	.080	.026		
2.0	.175	.096	.029	.169	.093	.029	.158	.088	.027	.148	.083	.026	.138	.078	.025		
3.0	.167	.089	.027	.162	.087	.026	.152	.083	.025	.143	.079	.024	.135	.075	.023		
4.0	.159	.083	.024	.155	.081	.024	.146	.078	.023	.139	.075	.022	.132	.072	.022		
5.0	.152	.077	.022	.148	.076	.022	.141	.073	.022	.134	.071	.021	.128	.068	.020		
6.0	.145	.073	.021	.142	.072	.021	.135	.069	.020	.129	.067	.020	.124	.065	.019		
7.0	.139	.069	.019	.136	.068	.019	.130	.066	.019	.124	.064	.019	.119	.062	.018		
8.0	.133	.065	.018	.130	.064	.018	.125	.062	.018	.120	.061	.018	.115	.059	.017		
9.0	.127	.061	.017	.125	.061	.017	.120	.059	.017	.116	.058	.017	.112	.057	.016		
10.0	.122	.058	.016	.120	.058	.016	.116	.057	.016	.112	.055	.016	.108	.054	.016		

pcc	80%			70%			50%			30%			10%			0	
pw	50%	30%	10%	50%	30%	10%	50%	30%	10%	50%	30%	10%	50%	30%	10%	0	
pfc	20%			20%			20%			20%			20%			0	
RCR	RCR:Room Cavity Ratio						Ceiling Cavity Exitance Coefficients (CCEC)										
0.0	.197	.197	.197	.169	.169	.169	.115	.115	.115	.066	.066	.066	.021	.021	.021		
1.0	.178	.164	.151	.153	.141	.130	.104	.097	.090	.060	.056	.052	.019	.018	.017		
2.0	.164	.139	.119	.140	.120	.103	.096	.083	.072	.055	.048	.042	.018	.016	.014		
3.0	.152	.121	.096	.130	.104	.083	.089	.072	.058	.052	.042	.034	.017	.014	.011		
4.0	.142	.106	.079	.122	.092	.068	.084	.064	.048	.048	.037	.029	.016	.012	.009		
5.0	.133	.095	.066	.115	.082	.057	.079	.057	.041	.046	.034	.024	.015	.011	.008		
6.0	.126	.085	.056	.108	.074	.049	.075	.052	.035	.043	.030	.021	.014	.010	.007		
7.0	.120	.078	.049	.103	.068	.042	.071	.047	.030	.041	.028	.018	.013	.009	.006		
8.0	.114	.072	.043	.098	.062	.037	.068	.044	.026	.040	.026	.016	.013	.008	.005		
9.0	.109	.067	.038	.094	.058	.033	.065	.041	.023	.038	.024	.014	.012	.008	.005		
10.0	.105	.062	.034	.090	.054	.030	.063	.038	.021	.037	.023	.013	.012	.007	.004		

C Range: 0 - 360DEG
C Interval: 22.5DEG
Test Speed: HIGH
Temperature:25.3℃
Operators:001
Test Date:2025-04-25

γ Range: 0 - 180DEG
γ Interval: 2.0DEG
Test System:EVERFINE GO-2000B_V1 SYSTEM V2.00.456
Humidity:65.0%
Test Distance:8.370m [K=1.0000]
Remarks:

UGR(Unified Glare Rating) Table

Test:U:220.70V I:0.0754A P:10.031W PF:0.6022 Freq:49.99Hz UTHDi:0.00% ITHDi:0.00% KDisp:0 Lamp Flux:625.975x1 lm										
NAME: SD3305 3000K RA90 80D						TYPE:		WEIGHT:		
SPEC.:						DIM.:		SERIAL No.:		
MFR.: VJC lighting						SUR.: 136*29		Shielding Angle:		
ceiling/cavity	0.7	0.7	0.5	0.5	0.3	0.7	0.7	0.5	0.5	0.3
walls	0.5	0.3	0.5	0.3	0.3	0.5	0.3	0.5	0.3	0.3
working plane	0.2	0.2	0.2	0.2	0.2	0.2	0.2	0.2	0.2	0.2
Room dimensions	Viewed crosswise					Viewed endwise				
x = 2H y = 2H	24.1	25.1	24.4	25.3	25.5	15.6	16.6	15.9	16.8	17.0
3H	24.0	24.9	24.3	25.1	25.3	15.5	16.4	15.8	16.6	16.8
4H	23.9	24.8	24.2	25.0	25.2	15.4	16.3	15.7	16.5	16.7
6H	23.8	24.6	24.1	24.9	25.1	15.3	16.1	15.6	16.4	16.6
8H	23.8	24.5	24.1	24.8	25.1	15.3	16.0	15.6	16.3	16.6
12H	23.7	24.5	24.1	24.7	25.0	15.2	16.0	15.6	16.3	16.6
4H 2H	23.9	24.7	24.2	24.9	25.2	15.4	16.3	15.7	16.5	16.8
3H	23.7	24.4	24.1	24.7	25.0	15.3	16.0	15.6	16.3	16.6
4H	23.6	24.3	24.0	24.6	24.9	15.2	15.9	15.6	16.2	16.5
6H	23.5	24.1	23.9	24.5	24.8	15.2	15.7	15.6	16.1	16.5
8H	23.5	24.0	23.9	24.4	24.8	15.1	15.7	15.5	16.0	16.4
12H	23.4	23.9	23.9	24.3	24.7	15.1	15.6	15.5	16.0	16.4
8H 4H	23.5	24.0	23.9	24.4	24.8	15.1	15.6	15.5	16.0	16.4
6H	23.4	23.8	23.8	24.2	24.7	15.0	15.5	15.5	15.9	16.3
8H	23.3	23.7	23.8	24.2	24.6	15.0	15.4	15.5	15.8	16.3
12H	23.3	23.6	23.8	24.1	24.6	15.0	15.3	15.4	15.7	16.2
12H 4H	23.4	23.9	23.9	24.3	24.7	15.1	15.5	15.5	15.9	16.3
6H	23.3	23.7	23.8	24.2	24.6	15.0	15.4	15.4	15.8	16.3
8H	23.3	23.6	23.8	24.1	24.6	14.9	15.3	15.4	15.7	16.2
Variations with the observer position at spacings(CIE Pub.117):										
S = 1.0H	+ 3.4 / - 9.5					+ 2.3 / - 6.1				
1.5H	+ 4.9 / -11.3					+ 4.2 / - 5.3				
2.0H	+ 6.7 / -12.8					+ 1.5 / - 1.2				

CIE Pub.117, 626.0 lm Total Lamp Luminous Flux Correct (8log(F/F0) = -1.6)
Area: 0.003944 m2

C Range: 0 - 360DEG
C Interval: 22.5DEG
Test Speed: HIGH
Temperature:25.3℃
Operators:001
Test Date:2025-04-25

γ Range: 0 - 180DEG
γ Interval: 2.0DEG
Test System:EVERFINE GO-2000B_V1 SYSTEM V2.00.456
Humidity:65.0%
Test Distance:8.370m [K=1.0000]
Remarks:

UTILIZATION FACTORS TABLE

Test:U:220.70V I:0.0754A P:10.031W PF:0.6022 Freq:49.99Hz UTHDi:0.00% ITHDi:0.00% KDisp:0 Lamp Flux:625.975x1 lm		
NAME: SD3305 3000K RA90 80D	TYPE:	WEIGHT:
SPEC.:	DIM.:	SERIAL No.:
MFR.: VJC lighting	SUR.: 136*29	Shielding Angle:

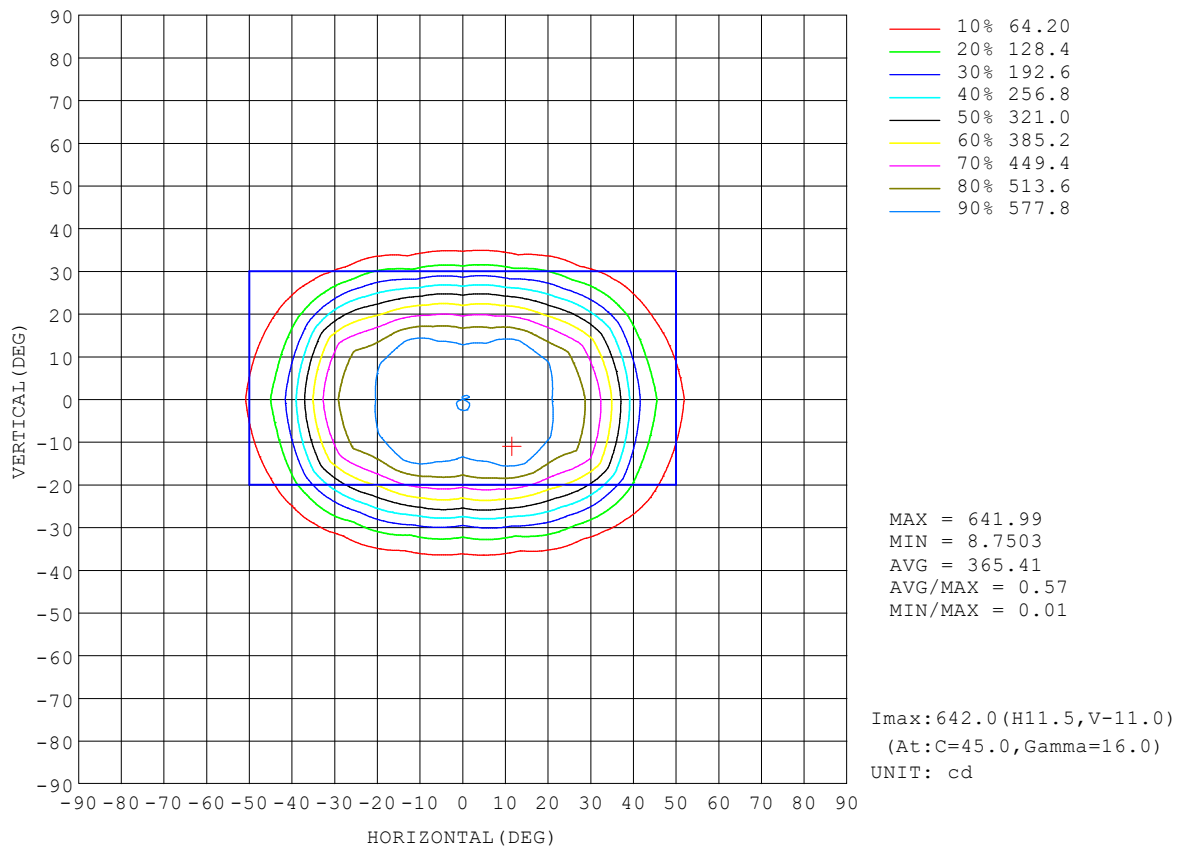
REFLECTANCE										
Ceiling	0.8	0.8	0.8	0.7	0.7	0.7	0.5	0.5	0.5	0
Walls	0.7	0.5	0.3	0.7	0.5	0.3	0.7	0.5	0.3	0
Working plane	0.2	0.2	0.2	0.2	0.2	0.2	0.2	0.2	0.2	0
ROOM INDEX	UTILIZATION FACTORS (PERCENT) $k(RI) \times RCR = 5$									
$k = 0.60$	85	79	75	85	79	75	84	78	75	71
0.80	93	87	83	92	87	83	91	86	83	79
1.00	98	92	88	97	92	88	95	91	87	83
1.25	102	97	93	101	96	93	99	95	92	87
1.50	105	100	97	104	99	96	101	98	95	90
2.00	108	104	100	106	102	99	104	100	98	92
2.50	110	106	103	108	104	102	105	102	100	93
3.00	111	108	105	109	106	104	106	103	101	95
4.00	113	110	108	111	109	107	107	105	104	96
5.00	115	112	110	112	110	109	108	107	105	97
ROOM INDEX	UF (total)									Direct
According to DIN EN 13032-2 2004			Suspended					SHRNOM = 1.25		

C Range: 0 - 360DEG
 C Interval: 22.5DEG
 Test Speed: HIGH
 Temperature: 25.3℃
 Operators: 001
 Test Date: 2025-04-25

γ Range: 0 - 180DEG
 γ Interval: 2.0DEG
 Test System: EVERFINE GO-2000B_V1 SYSTEM V2.00.456
 Humidity: 65.0%
 Test Distance: 8.370m [K=1.0000]
 Remarks:

ISOCANDELA DIAGRAM

Test:U:220.70V I:0.0754A P:10.031W PF:0.6022 Freq:49.99Hz UTHDi:0.00% ITHDi:0.00% KDisp:0 Lamp Flux:625.975x1 lm		
NAME: SD3305 3000K RA90 80D	TYPE:	WEIGHT:
SPEC.:	DIM.:	SERIAL No.:
MFR.: VJC lighting	SUR.: 136*29	Shielding Angle:

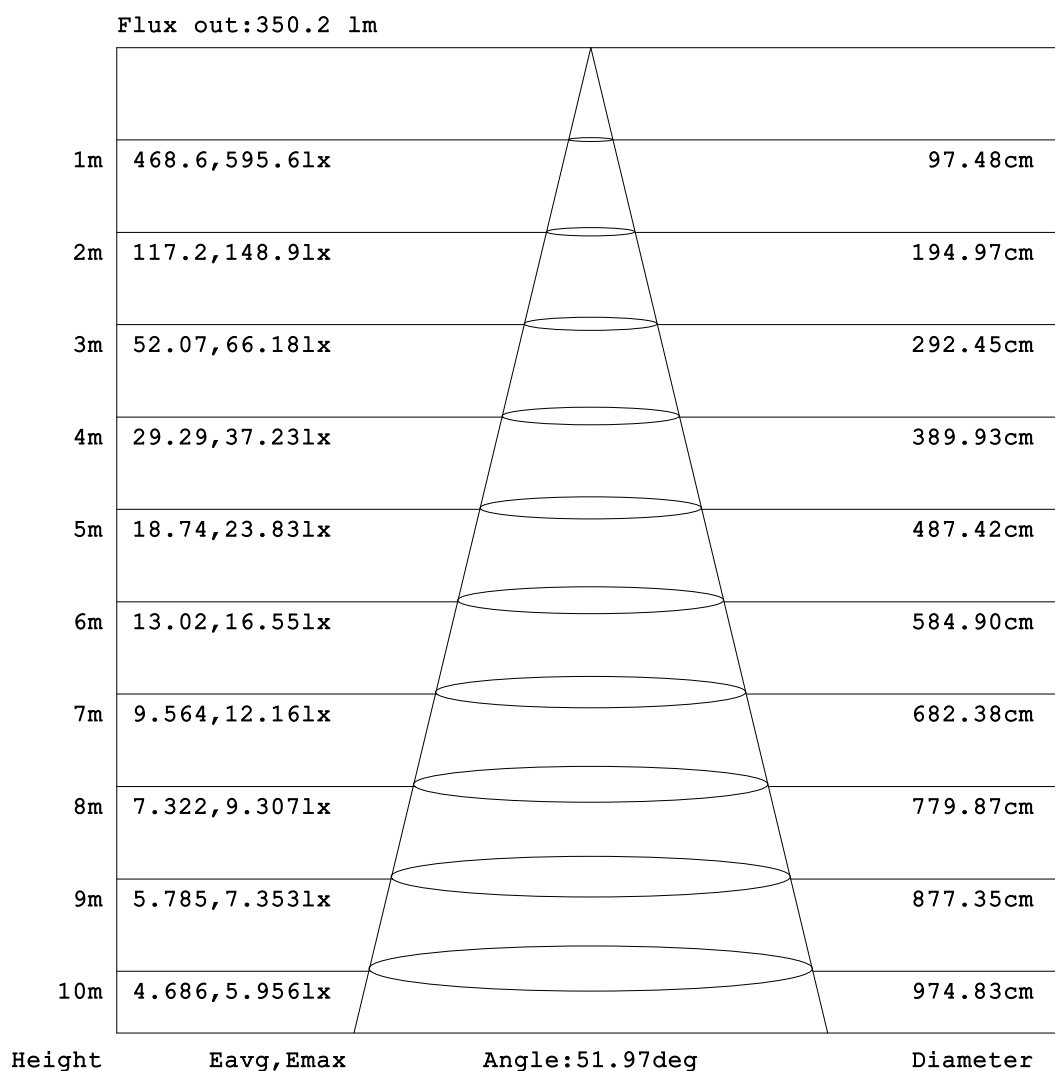


C Range: 0 - 360DEG
C Interval: 22.5DEG
Test Speed: HIGH
Temperature: 25.3°C
Operators: 001
Test Date: 2025-04-25

γ Range: 0 - 180DEG
γ Interval: 2.0DEG
Test System: EVERFINE GO-2000B_V1 SYSTEM V2.00.456
Humidity: 65.0%
Test Distance: 8.370m [K=1.0000]
Remarks:

AAI Figure

Test:U:220.70V I:0.0754A P:10.031W PF:0.6022 Freq:49.99Hz UTHDi:0.00% ITHDi:0.00% KDisp:0 Lamp Flux:625.975x1 lm		
NAME: SD3305 3000K RA90 80D	TYPE:	WEIGHT:
SPEC.:	DIM.:	SERIAL No.:
MFR.: VJC lighting	SUR.: 136*29	Shielding Angle:



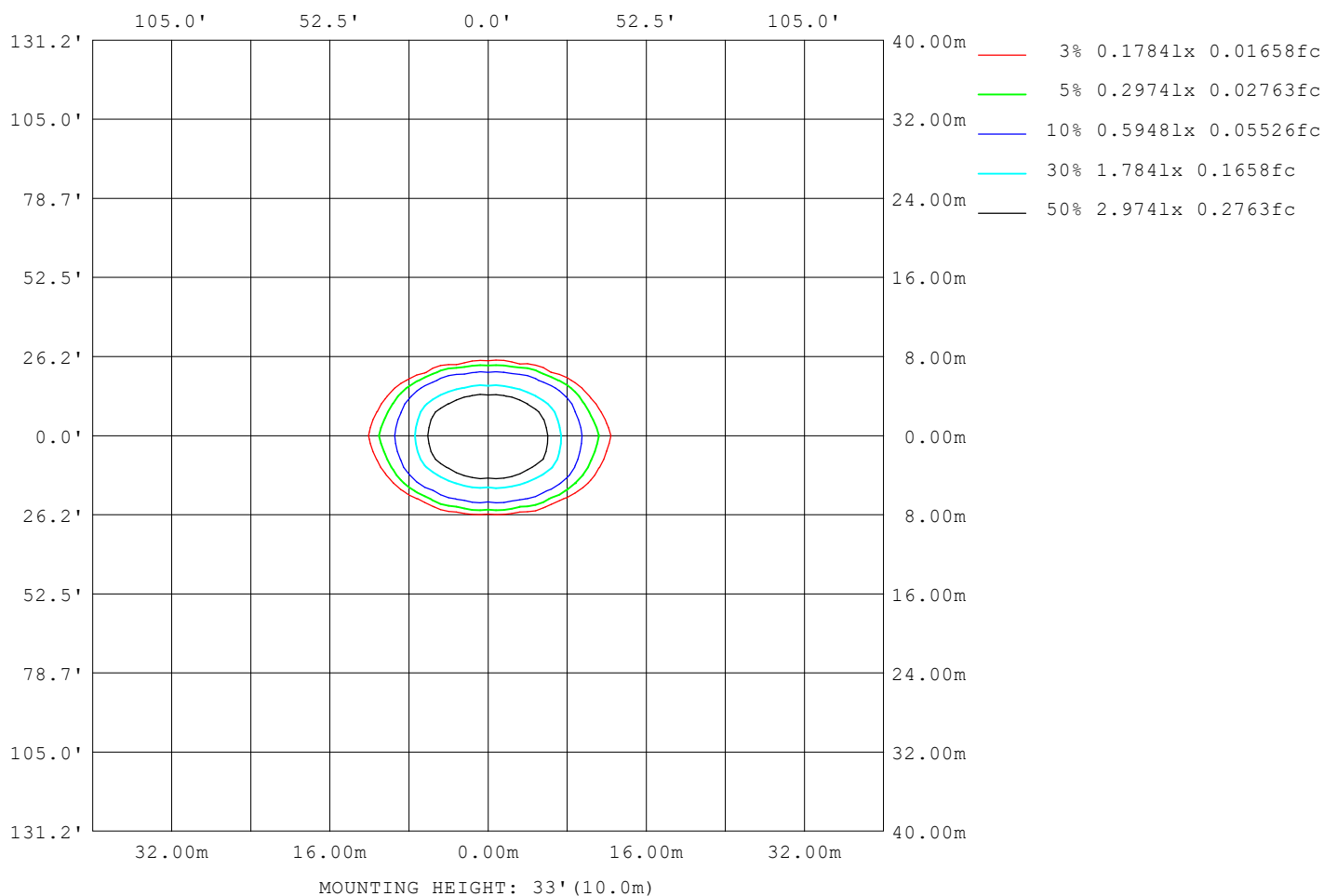
Note: The Curves indicate the illuminated area and the average illumination when the luminaire is at different distance.

C Range: 0 - 360DEG
C Interval: 22.5DEG
Test Speed: HIGH
Temperature: 25.3°C
Operators: 001
Test Date: 2025-04-25

γ Range: 0 - 180DEG
γ Interval: 2.0DEG
Test System: EVERFINE GO-2000B_V1 SYSTEM V2.00.456
Humidity: 65.0%
Test Distance: 8.370m [K=1.0000]
Remarks:

ISOLUX DIAGRAM

Test:U:220.70V I:0.0754A P:10.031W PF:0.6022 Freq:49.99Hz UTHDi:0.00% ITHDi:0.00% KDisp:0 Lamp Flux:625.975x1 lm		
NAME: SD3305 3000K RA90 80D	TYPE:	WEIGHT:
SPEC.:	DIM.:	SERIAL No.:
MFR.: VJC lighting	SUR.: 136*29	Shielding Angle:



C Range: 0 - 360DEG
C Interval: 22.5DEG
Test Speed: HIGH
Temperature: 25.3°C
Operators: 001
Test Date: 2025-04-25

γ Range: 0 - 180DEG
γ Interval: 2.0DEG
Test System: EVERFINE GO-2000B_V1 SYSTEM V2.00.456
Humidity: 65.0%
Test Distance: 8.370m [K=1.0000]
Remarks:

LED Avg.L Report

Test:U:220.70V I:0.0754A P:10.031W PF:0.6022 Freq:49.99Hz UTHDi:0.00% ITHDi:0.00% KDisp:0 Lamp Flux:625.975x1 lm		
NAME: SD3305 3000K RA90 80D	TYPE:	WEIGHT:
SPEC.:	DIM.:	SERIAL No.:
MFR.: VJC lighting	SUR.: 136*29	Shielding Angle:

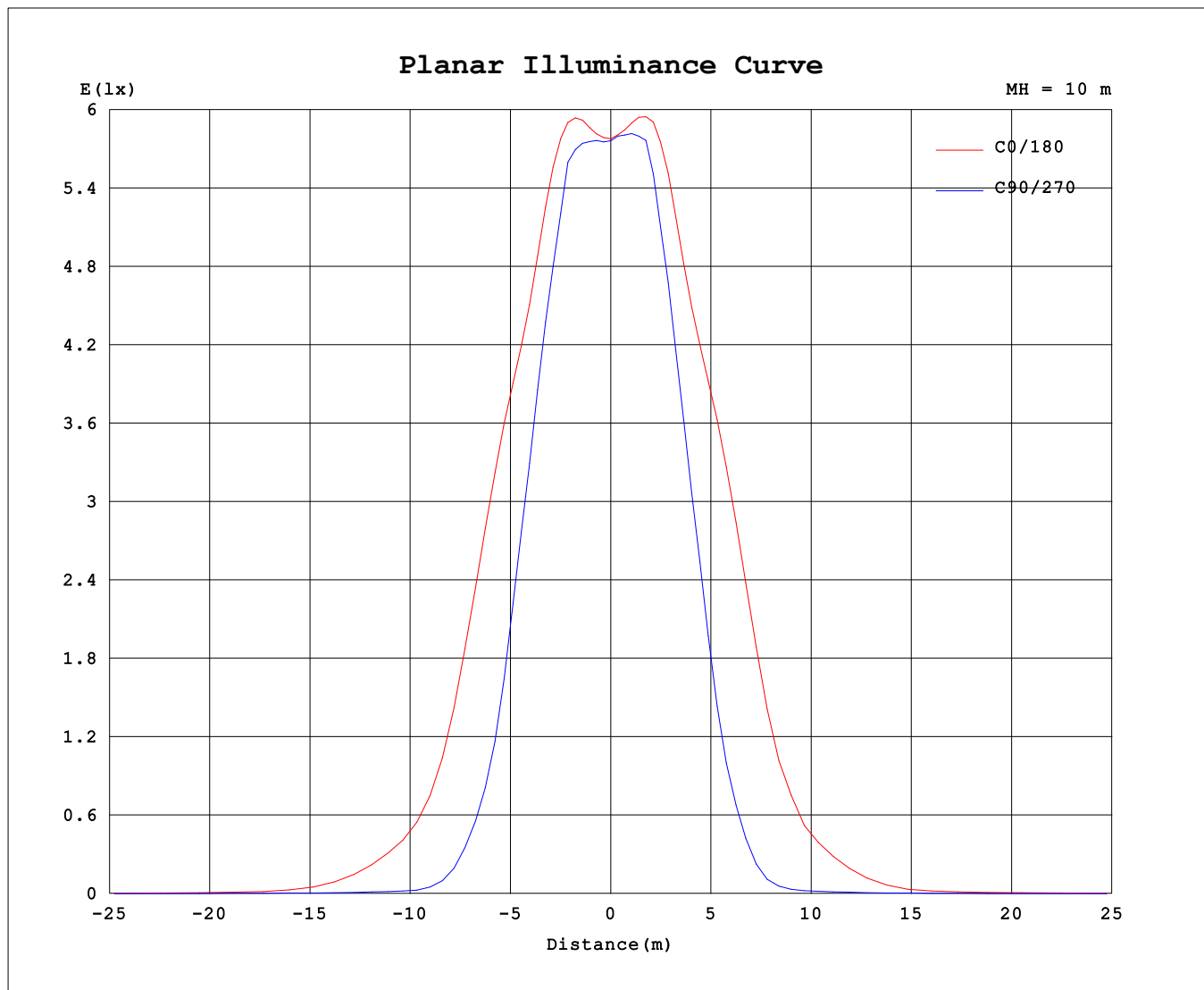
AvgL	cd/m2
L_0~180 (65) av	4946
L_0~180 (75) av	3056
L_0~180 (85) av	344
L_90~270 (65) av	944
L_90~270 (75) av	536
L_90~270 (85) av	325
L_45 (65) av	962
L_45 (75) av	570
L_45 (85) av	259

Standard: GB/T 29293-2012

C Range: 0 - 360DEG
C Interval: 22.5DEG
Test Speed: HIGH
Temperature:25.3℃
Operators:001
Test Date:2025-04-25

γ Range: 0 - 180DEG
γ Interval: 2.0DEG
Test System:EVERFINE GO-2000B_V1 SYSTEM V2.00.456
Humidity:65.0%
Test Distance:8.370m [K=1.0000]
Remarks:

Planar Illuminance Curve



C Range: 0 - 360DEG
C Interval: 22.5DEG
Test Speed: HIGH
Temperature: 25.3 °C
Operators: 001
Test Date: 2025-04-25

γ Range: 0 - 180DEG
 γ Interval: 2.0DEG
Test System: EVERFINE GO-2000B_V1 SYSTEM V2.00.456
Humidity: 65.0%
Test Distance: 8.370m [K=1.0000]
Remarks:

LUMINOUS DISTRIBUTION INTENSITY DATA

Test:U:220.70V I:0.0754A P:10.031W PF:0.6022 Freq:49.99Hz		
UTHDi:0.00% ITHDi:0.00% KDisp:0 Lamp Flux:625.975x1 lm		
NAME: SD3305 3000K RA90 80D	TYPE:	WEIGHT:
SPEC.:	DIM.:	SERIAL No.:
MFR.: VJC lighting	SUR.: 136*29	Shielding Angle:

Table--1

UNIT: cd

C (DEG) γ (DEG)	0	22.5	45	67.5	90	112.5	135	157.5	180	202.5	225	247.5	270	292.5	315	337.5			
0	577	577	577	577	577	577	577	577	577	577	577	577	577	577	577	577			
5	585	582	582	580	581	582	584	587	588	589	588	587	585	585	584	585			
10	620	616	610	599	597	604	614	620	621	623	617	608	604	607	613	620			
15	632	636	634	600	570	604	638	631	628	635	642	587	559	581	642	640			
20	587	603	595	510	465	503	574	592	580	588	557	476	437	471	557	602			
25	549	559	506	413	363	407	483	553	549	547	466	375	333	375	464	554			
30	495	503	354	238	179	230	333	481	502	479	318	192	154	196	311	462			
35	410	419	248	130	97.7	125	226	387	417	387	214	93.4	74.6	99.0	206	367			
40	231	227	101	33.8	22.0	33.8	89.2	205	226	190	70.0	16.4	13.1	20.3	71.5	195			
45	147	121	40.3	10.8	7.61	11.9	34.6	106	140	96.6	23.0	7.47	6.15	7.76	26.0	102			
50	83.5	50.6	9.01	4.91	5.14	4.86	8.09	37.7	73.2	35.9	5.99	4.20	4.29	4.29	6.76	37.9			
55	44.7	24.4	4.61	4.11	4.20	4.04	3.85	14.9	32.5	13.6	3.30	3.17	3.23	3.28	3.35	16.9			
60	13.8	7.20	2.67	2.82	2.85	2.73	2.53	5.29	11.0	5.26	2.06	1.93	1.96	2.02	2.17	5.69			
65	9.22	4.26	2.05	2.08	2.11	2.01	1.92	2.98	8.31	3.08	1.45	1.32	1.33	1.40	1.56	3.05			
70	5.85	1.56	1.24	1.24	1.28	1.21	1.13	1.12	5.21	1.10	0.77	0.69	0.68	0.76	0.88	1.19			
75	3.87	0.94	0.86	0.85	0.89	0.82	0.77	0.81	3.50	0.75	0.43	0.37	0.35	0.44	0.56	0.84			
80	0.67	0.47	0.43	0.43	0.47	0.41	0.38	0.36	0.33	0.28	0.08	0.06	0.03	0.10	0.19	0.39			
85	0.22	0.23	0.24	0.24	0.26	0.22	0.19	0.16	0.11	0.08	0.00	0.00	0.00	0.00	0.01	0.16			
90	0.00	0.00	0.02	0.01	0.00	0.00	0.00	0.00	0.00	0.00	0.00	0.00	0.00	0.00	0.00	0.00			
95	0.00	0.00	0.00	0.00	0.00	0.00	0.00	0.01	0.02	0.00	0.00	0.00	0.00	0.00	0.00	0.00			
100	0.03	0.03	0.00	0.00	0.00	0.00	0.00	0.06	0.07	0.03	0.01	0.00	0.00	0.00	0.00	0.00			
105	0.10	0.08	0.00	0.00	0.00	0.00	0.01	0.13	0.14	0.10	0.06	0.00	0.00	0.00	0.01	0.05			
110	0.28	0.23	0.07	0.03	0.00	0.05	0.13	0.29	0.31	0.27	0.19	0.04	0.03	0.01	0.11	0.20			
115	0.45	0.37	0.18	0.09	0.05	0.14	0.26	0.44	0.47	0.43	0.31	0.14	0.09	0.08	0.22	0.33			
120	0.74	0.64	0.42	0.28	0.22	0.34	0.51	0.73	0.76	0.72	0.58	0.37	0.28	0.28	0.46	0.61			
125	0.95	0.86	0.63	0.46	0.39	0.53	0.72	0.94	0.97	0.93	0.79	0.57	0.46	0.47	0.66	0.83			
130	1.30	1.20	0.98	0.82	0.75	0.88	1.07	1.30	1.33	1.30	1.15	0.92	0.82	0.84	1.02	1.19			
135	1.54	1.45	1.24	1.09	1.02	1.14	1.33	1.55	1.58	1.55	1.41	1.19	1.09	1.11	1.29	1.44			
140	1.85	1.80	1.65	1.54	1.48	1.58	1.73	1.89	1.92	1.88	1.81	1.62	1.55	1.58	1.71	1.80			
145	2.03	2.01	1.92	1.85	1.79	1.87	1.98	2.09	2.10	2.07	2.06	1.92	1.87	1.88	1.99	2.02			
150	2.26	2.30	2.28	2.27	2.22	2.28	2.29	2.32	2.34	2.30	2.36	2.33	2.31	2.32	2.36	2.31			
155	2.41	2.47	2.48	2.52	2.49	2.50	2.43	2.46	2.49	2.43	2.50	2.54	2.58	2.57	2.57	2.48			
160	2.62	2.72	2.76	2.82	2.77	2.71	2.59	2.66	2.71	2.63	2.66	2.73	2.85	2.86	2.84	2.71			
165	2.82	2.90	2.93	2.96	2.88	2.81	2.75	2.84	2.88	2.80	2.80	2.82	2.96	2.99	3.00	2.90			
170	3.14	3.20	3.18	3.16	3.05	3.03	3.05	3.18	3.20	3.15	3.09	3.02	3.10	3.16	3.24	3.20			
175	3.33	3.38	3.34	3.27	3.16	3.20	3.27	3.39	3.39	3.35	3.30	3.18	3.20	3.26	3.39	3.38			
180	3.52	3.52	3.46	3.37	3.32	3.36	3.47	3.53	3.53	3.51	3.49	3.35	3.35	3.36	3.48	3.53			

C Range: 0 - 360DEG

C Interval: 22.5DEG

Test Speed: HIGH

Temperature:25.3℃

Operators:001

Test Date:2025-04-25

γ Range: 0 - 180DEG

γ Interval: 2.0DEG

Test System:EVERFINE GO-2000B_V1 SYSTEM V2.00.456

Humidity:65.0%

Test Distance:8.370m [K=1.0000]

Remarks: